

REPLACEMENT BIO PRO CARTRIDGE

BIOFILTER STAINLESS STEEL

Page 2



BIOFILTER BLUE

Page 6



Bio Pro cartridge capacity: 150,000 L and MAX 1 year after commissioning

Know more : www.biodynamizer.com or team@biodynamizer.com



Biodynamizer®
Enjoy the natural movement of life

REPLACEMENT BIO PRO CARTRIDGE

BIOFILTER STAINLESS STEEL

BEFORE replacing your Bio Pro cartridge, make sure to:

1. Have a **few liters of reserve water** before closing the valves of your sanitary installation and replacing it in order to clean the inside of the Biofilter housing
2. Install a **bucket** under the box before unscrewing the black opening knob of the Biofilter to collect the water that will come out of the box
3. It is recommended to **replace the cartridge with two people**: the second person supporting the box when it "*falls*" because it is quite heavy (cartridge soaked in water +/- 5 Kg), while the first unscrews the black dial. And the same goes for putting it back in place, someone must support the box while the other screws back the black knob in order to properly adjust the 2 parts of the Biofilter (flat surface between these 2 parts to ensure the watertightness of the Biofilter)
4. **Recycling the Bio Pro cartridge**: used filtration cartridges are made of polypropylene, activated carbon from coconuts and retained pollutants. According to European legislation, **these cannot be recycled and must therefore be added to your household waste bins or taken to the container park.**



Bio Pro cartridge capacity: 150,000 L and MAX 1 year after commissioning



REPLACEMENT BIO PRO CARTRIDGE

- Close the valves upstream and downstream of the Biofilter and open the valve bleeder (downstream) to release the pressure and partially empty the Biofilter. A small jet of water will come out.



- Loosen the clamp by turning the black knob



- If the 2 parts of the housing still remain stuck (suction phenomenon due to the pressure inside the Biofilter) you must then **release this pressure by opening the valve bleeder again and retaining the lower part of the housing at the same time. Close the valve.**



- Open the housing to replace the saturated cartridge



Know more : www.biodynamizer.com or team@biodynamizer.com



Biodynamizer®
Enjoy the natural movement of life

REPLACEMENT BIO PRO CARTRIDGE

- Check that the **O-Ring** is present: **2 black rubber gaskets coiled on either side (above and below) the blue plastic ring**, intended to guarantee the tightness of the Biofilter



Clean both sides of the O-Ring as well as the inside of the case with water to remove all impurities (sand, corrosion, mud, etc.)

- Properly **place (horizontally flat) the O-ring** on the lower edge of the Biofilter stainless steel housing and place the **filter cartridge of the Biofilter in the housing**



- Make sure that the **stainless-steel strapping slide of the upper and lower housing** of the Biofilter follows the contours **in a flat and regular manner** as shown in the photo below on the right (and this all around the device -> check that this or also the case at the back, in the direction of the wall!)



- Close the housing of the filter and **tighten until the stop (squeaks)**, using the **black knob** (bakelite ring), the stainless-steel clamp to guarantee the tightness of the Biofilter. There remains a small free space in the middle of the strapping (the 2 parts of the strapping do not touch, right photo below!)

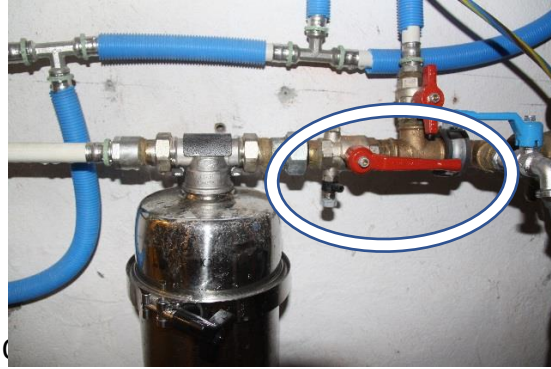


Biodynamizer®
Enjoy the natural movement of life

Know more : www.biodynamizer.com or team@biodynamizer.com

REPLACEMENT BIO PRO CARTRIDGE

- It is then necessary to **open progressively the valves**, first the one upstream (before the filter: the one on the side of the city water inlet meter) then, and **after having first opened a valve of the downstream hydraulic installation** (in order to avoid too much air in the pipes) **GRADUALLY OPEN THE VALVE DOWNSTREAM of the Biofilter (and Biodynamizer)**, in order to avoid producing too much pressure suddenly in the pipes which could have the consequence of loosening existing limestone particles inside the pipes resulting in blocked pipes or fittings!



- Then **open all the water taps in the home** (taps, showers, baths, etc.) for a **few minutes**. Air will escape through the open water taps (the cloudy appearance of water is actually air mixed with water, See photo below of water in the glass of water just after opening the water valves). After several minutes of water flow, the air in the pipes will disappear and the water will immediately be transparent again!



If you are going on vacation or after a prolonged period of absence (> 8 days), let the water run from a tap for +/- 5 minutes in order to purge the water that will have stagnated in the sanitary pipes!

All you have to do is taste and enjoy the freshly filtered and dynamized water comparable to mountain water!



Tip: take advantage of this cartridge change to maintain your faucet aerators, shower heads, etc. Unscrew them and soak them in vinegar for a few hours for example.



REPLACEMENT OF THE BIO PRO FILTRATION CARTRIDGE

BIOFILTER BLUE

BEFORE replacing your Bio Pro cartridge, make sure to:

1. Have a **few liters of reserve water** before closing the valves of your sanitary installation and replacing it in order to clean the inside of the Biofilter housing
2. Install a **bucket** under the box before unscrewing the black opening knob of the Biofilter to collect the water that will come out of the box
3. It is recommended to **replace the cartridge with two people**: the second person supporting the box when it "*falls*" because it is quite heavy (cartridge soaked in water +/- 5 Kg), while the first unscrews the black dial. And the same goes for putting it back in place, someone must support the box while the other screws back the black knob in order to properly adjust the 2 parts of the Biofilter (flat surface between these 2 parts to ensure the watertightness of the Biofilter)
4. **Recycling the Bio Pro cartridge**: used filtration cartridges are made of polypropylene, activated carbon from coconuts and retained pollutants. According to European legislation, **these cannot be recycled and must therefore be added to your household waste bins or taken to the container park.**



Bio Pro cartridge capacity: 150,000 L and MAX 1 year after commissioning



REPLACEMENT BIO PRO FILTRATION CARTRIDGE

1. Close the valves upstream (before) of the Biofilter and downstream (after) of the Biodynamizer + release the pressure in the Biofilter by pushing the red button on its “hat”
2. Purge the sanitary installation using the valve purgers upstream (before) of the Biofilter and downstream (after) of the Biodynamizer (the Biofilter contains +/- 3 liters of water, the Biodynamizer contains +/- 2.2 liters of water). Provide a bucket to collect this water.
3. Then there are 2 possibilities:
 - Unscrew the $\frac{3}{4}$ inch fittings to remove the Biofilter from its guide rail and place it on the ground (then carefully check the direction of water flow when reconnecting the Biofilter to the pipes!)
 - Or leave the Biofilter connected to the wall. To do this, and given the thickness of this flange, you must ensure that the black clamping butterfly is removed from the wall hook and slide the Biofilter slightly towards you (1 to 2 cm), which is possible by reason for connecting the Biofilter with the multiskin sanitary pipes and unscrew the black knob in order to loosen the strapping of the “hat” flange and separate the 2 parts of the Biofilter (retain the Biofilter housing which separates from the “hat” which remains connected to the sanitary pipes and collect the water from the box in a bucket).
4. Clean the inside of the case and the seals with water and remove the used cartridge in order to replace it with the new cartridge (from which the packaging plastic has previously been removed) by placing it in the case with the hole. entry upwards
5. Close the Biofilter by tightening the rim of the clamp with the black knob (tightening it until it stops). Carefully adjust the 2 parts of the Biofilter (“hat” and “housing”) so that the surface is flat between these 2 parts (which ensures the tightness of the Biofilter). Return the Biofilter to its place in the wall hook and insert the black butterfly into the hole.
6. If necessary, refer to the device **placement instructions** found on the “**Library**” tab of the website www.biodynamizer.com as well as the placement instructions from the manufacturer Aquaphor
7. Gradually open the upstream valves until the Biofilter (and the Biodynamizer) is completely filled, then open the downstream valve, in order to prevent limescale concretions from being released inside your sanitary pipes, which could clog taps) and let water run from all the taps in your installation for 5 minutes.
8. It is normal for the water to be cloudy for a few minutes (this is oxygen dissolved in the water which evaporates after a few seconds, this does not prevent you from drinking the water)

REPLACEMENT BIO PRO FILTRATION CARTRIDGE

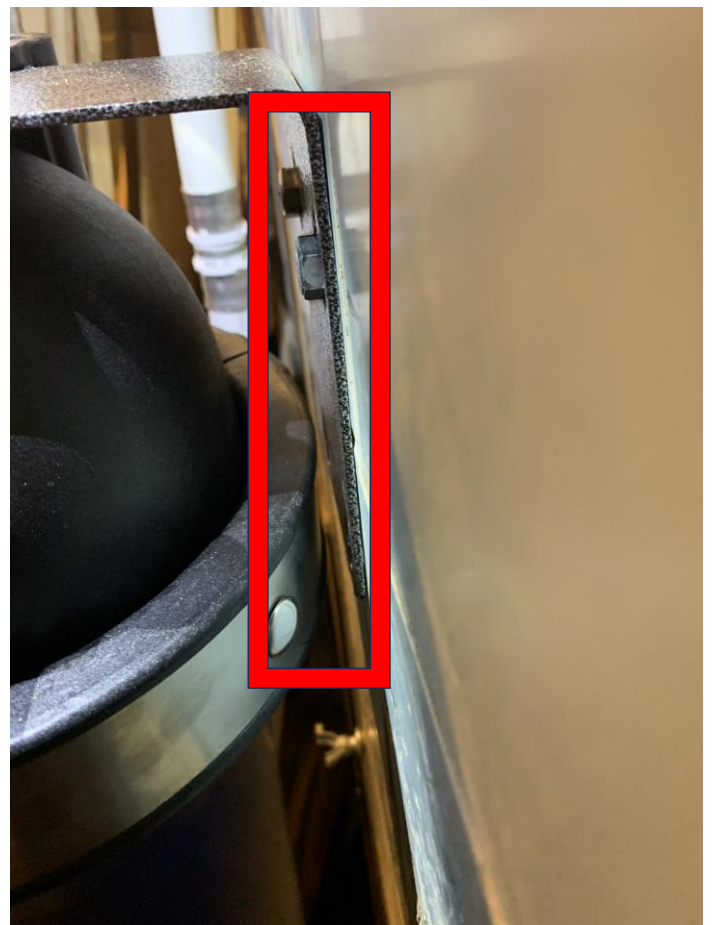


Know more : www.biodynamizer.com or team@biodynamizer.com

REPLACEMENT BIO PRO FILTRATION CARTRIDGE



REPLACEMENT BIO PRO FILTRATION CARTRIDGE



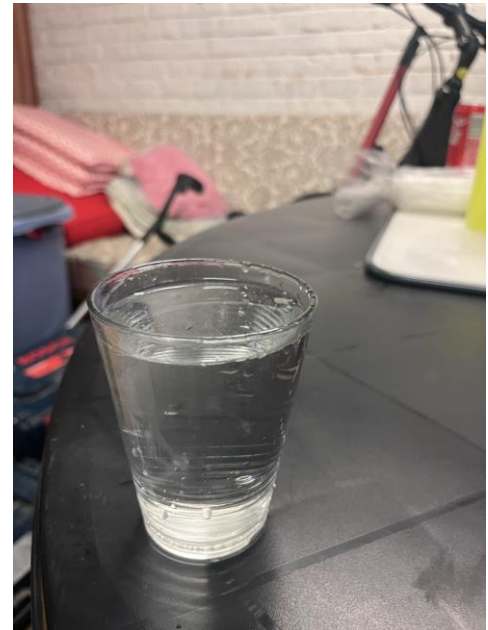
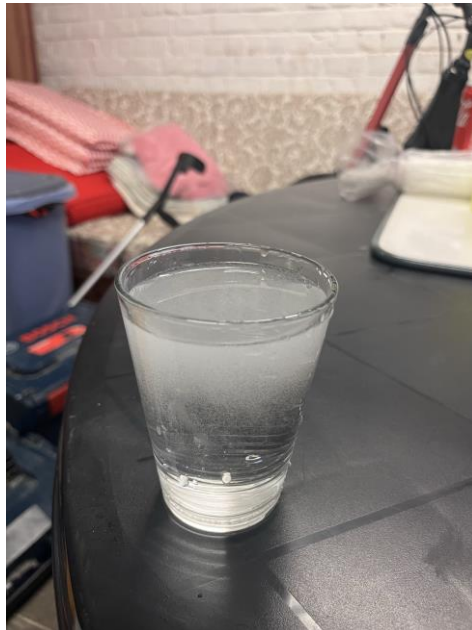
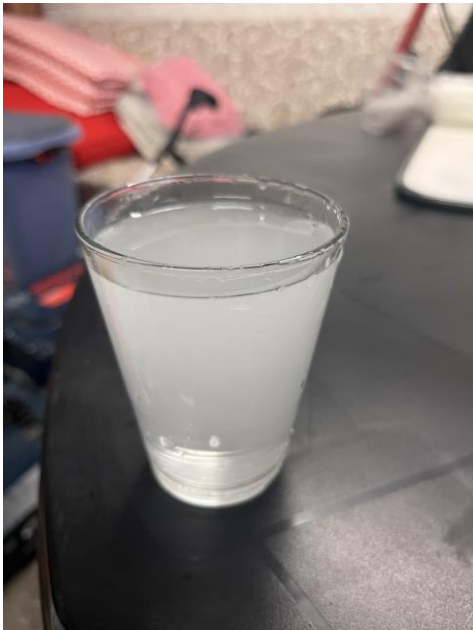
REPLACEMENT BIO PRO FILTRATION CARTRIDGE



REPLACEMENT CARTOUCHE DE FILTRATION BIO PRO



If you are going on vacation or after a prolonged period of absence (> 8 days), let the water run from a tap for +/- 5 minutes in order to purge the water that will have stagnated in the sanitary pipes!



Tip: take advantage of this cartridge change to maintain your faucet aerators, shower heads, etc. Unscrew them and soak them in vinegar for a few hours for example.





- **Connection after the cold-water meter (max 38 ° C)**
- **Capacity: 150 m³ and max 1 year**
- **Flow rate: 1.5 m³ / Hour (or 25 L / min) at 3 bars**
- **Operating pressure max: 6.5 bar, pressure loss 0.1 bar if city water pressure: 1.5 > < 6 bar**
- **Legal warranty: 2 years**
- **Connections: 3/4 inch (ext. Ø: 26 mm, thickness : 3 mm, int. Ø : 20 mm)**
- **Dimensions and weight:**
 - ✓ **Biofilter housing:**
 - ✓ **PP:** Polypropylene reinforced with Glass Fiber (PP GF 10)
 - ✓ **H:** 606 mm x **Diameter:** 225 mm, weight of empty case: 3.4 Kg
 - ✓ **Bio Pro cartridge:** H: 505 mm x Diameter: 144 mm, max weight 3.5 kg of mixture of activated carbon, ionized silver and hollow fibers
- **Certificate of Sanitary Conformity issued by the Carso laboratory: n° 21 ACC LY 990**
- **Conformity certifications of the materials according to European regulations:**
(EC) 1935/2004 & (EC) 1907/2006 (REACH) & (EC) 2023/2006 & (EC) 10/2011

