



DRINK BETTER! DYNAMIZE YOUR TAP WATER JUST LIKE IN NATURE!



Biodynamizer®
Enjoy the natural movement of life

THE BENEFITS OF DYNAMIZED WATER

Water with a **pure, soft and round taste** for the whole family



Water :

- **More energy**



- **More hydrating**



- **Less oxidizing**



Water for the whole house,
at all taps, for all baths,
showers



An ecological solution,
no more need for plastic
bottles or water softener





Dynamized
Technologies s.a.



FILTER

BIOFILTER : THE PRINCIPLE = ACTIVE CARBON FILTRATION

- **Filtration by adsorption** : activated carbon, mixed with hollow fibers in which there is ionized silver. This combination will remove most of the pollutants that would still be present in city water (i.e. *chlorine, bad tastes and odours, pipe corrosion, bacteria, organic pesticides, heavy metals...*) while **preserving minerals** (what a *reverse osmosis* unit does not do!).
- Minerals are also essential for our **health**, in particular because they contain trace elements (which are fully metabolized), but also magnesium and calcium. The minerals contained in water contribute between 20% and 50% to the Recommended Nutritional Intake (depending on the mineral content of the water and the age of the people concerned). These minerals have a beneficial role in particular for hypertension, cardiovascular accidents, cancers, fatigue, diabetes, coronary insufficiencies, osteoporosis...
- The **limestone** is therefore not retained by the filter like a softener would, but it will be **restructured** by the Biodynamizer to reduce the problems associated with limestone (it will transform the crystalline structure of calcite in aragonite, a white powder which does not become encrusted and is easily evacuated).

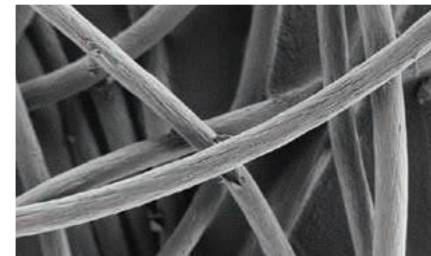
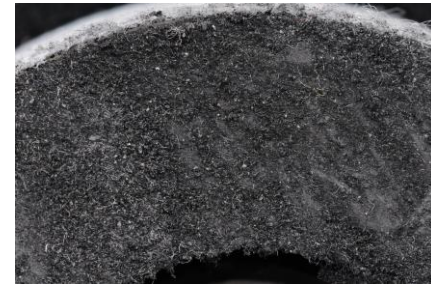


Biodynamizer®
Enjoy the natural movement of life



BIOFILTER : HIGH PERFORMANCE TRIPLE FILTRATION TECHNOLOGY

- **Filtration 1: Pre-filtration: *Spunbond*** (made with thermally welded filaments, 100% polypropylene) **mixed with hollow fiber**. Sediment filter which retains particles of iron, sand, mud, neutralizes the development of germs, bacteria etc ... and protects the activated carbon block
- **Filtration 2:** the **Carbon Fiber Block** (patent no. 2282494) is composed of **activated carbon in sintered granules (porosity 20 µm) and a hollow fiber**. Activated carbon is obtained after calcination of **coconut shells** (increases the number of micropores) by injection of pressurized hot water vapor (activation of the carbon by different temperature levels of 900°C-1,000°C for several hours; activated carbon is regenerated by **oxidation**). Chemical filtration of chlorine, nitrates, nitrites, organic pesticides and herbicides, tastes and odors
- **Filtration 3: Hollow fiber** (patents n° 20704036 & US n° 6514413) ; fiber with a fiber diameter of **10 µm**, mixed with activated carbon. This fiber resembles the roots of a tree which bind the granules of activated carbon into a dense structure. Its function is threefold, it:
 - allows you to have a **very large adsorption surface**, that is to say a good distribution of water over the entire surface of the activated carbon (**this avoids preferential water channels**)
 - **physically retains pollutants** in its structure up to diameters of **5 µm** (physical filtration of heavy metals: lead, aluminum, bacteria, arsenic and parasites) ; (patent n° 2429067)
 - incorporates in its structure **ionized silver** which is **bactericidal** (neutralizes microorganisms, antibiotics, drugs etc...), the silver is therefore not mixed with the activated carbon but retained in the microfiber ; (patent n° 2172720)





ACTIVATED CARBON FILTRATION PRINCIPLE = ADSORPTION SURFACE

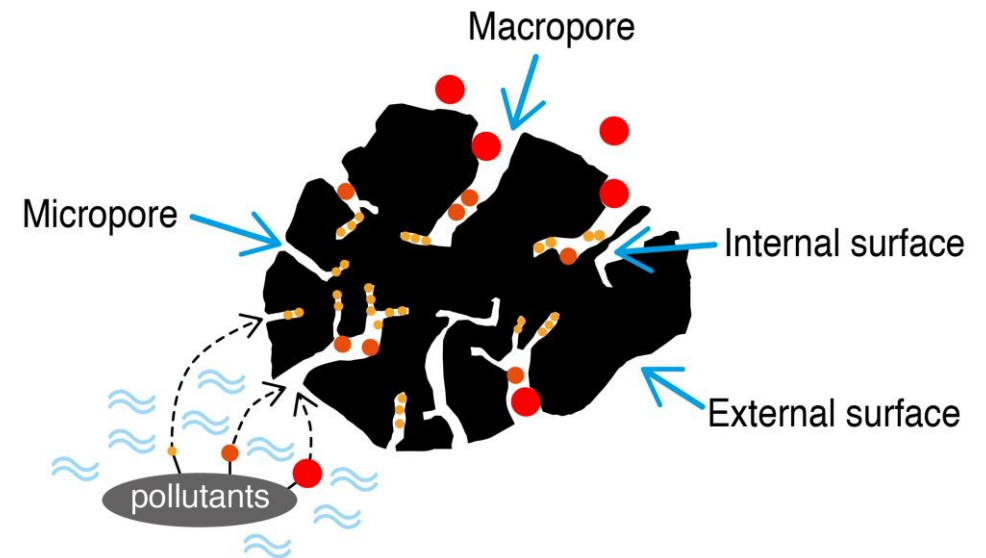
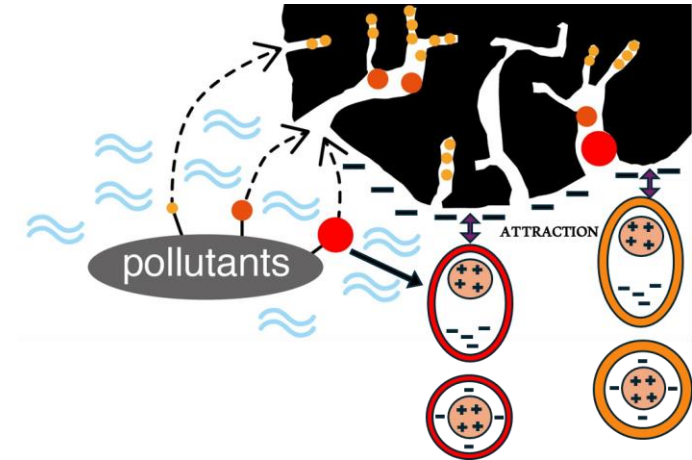
Activated carbon: Principle of physical filtration (physisorption) of pollutants (organic pesticides, heavy metals, PFAS, drugs, hormones, etc. measured in $\mu\text{g/l}$)

- **Electro-adsorption surface**

- The pollutants (their electropositive parts) will be "**Attracted**", by **potential difference**, by the electronegative surface of the activated carbon (the carbon has available electrons on its surface which will attract the electropositive parts of the polluting molecules = **Van Der Waals forces**: intermolecular bond forces due to low intensity electrical interactions = electrostatic)

- **Physical adsorption surface**

- Activated carbon will also "**Retain**" **non-soluble pollutants** (hydrophobic), i.e. non-polarized or weakly polarized pollutants, in its **porous structure (external and internal)**. This is made up of micropores (millions of empty microscopic alveoli) whose size is between $<2\text{ nm}$ and 50 nm in diameter. **The more micropores there are, the more empty spaces there are that can fix pollutants and the greater the adsorption surface.**

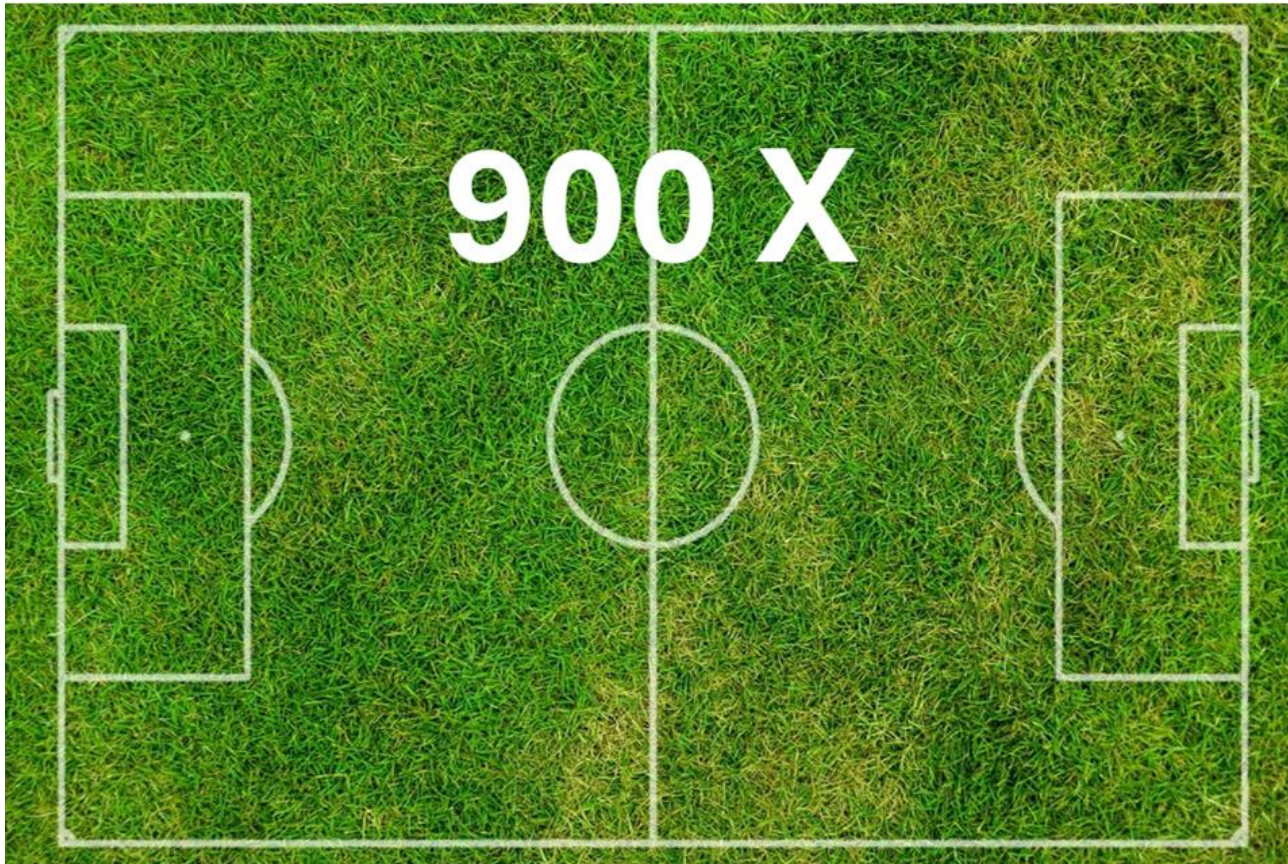




ACTIVATED CARBON FILTRATION PRINCIPLE = ADSORPTION SURFACE

Size of the adsorption surface in the Biofilter

The 3 kgs of activated carbon from coconuts in the Biofilter, mixed with the hollow fiber, provide an **adsorption surface equivalent to 900-hectare football fields!!!** (3,000 m²/g of activated carbon adsorption surface x 3 Kg), i.e. a surface area 33 times larger than that of conventional filters!



TECHNICAL CHARACTERISTICS OF THE BIOFILTER

- **Connection after the cold water meter (max 38°C)**
- **Filtration capacity:** 150m³ (150,000 L) and max 1 year, i.e. good performance for 1 family, in 1 house, for 1 year
- **Flow rate:** 1.5 m³/hour (or 25 L/min)
- **Max pressure:** 6.5 bars, pressure loss 0.1 bar if city water pressure: 1.5 >< 6 bars
- **Housing:** Polypropylene reinforced with glass Fiber (PP GF 10)
- **Legal guarantee (2 years)**
- **Connections:** 3/4 inch
- **Dimensions:**
 - Height: 606 mm x Diameter: 225 mm
 - Weight: Housing: 3.4 Kg + Bio Pro Cartridge: 3.5 Kg = 6.9 kg
- **Health Compliance Certificate awarded by the Carso laboratory: n° 21 ACC LY 990**
- **Material conformity certifications according to European regulations:**
(EC) 1935/2004 & (EC) 1907/2006 (REACH) & (EC) 2023/2006 & (EC) 10/2011



A GLOBAL SOLUTION: DRINK & BATHS & SHOWERS



- Delicious water to **drink**, a **pure, smooth and rounded taste** that makes you want to drink
- **Water is not directly hydrating for the skin!** Indeed, the epidermis constitutes a barrier which is protected by the famous "**hydrolipidic film**" which prevents water from entering your body.
- However, when **tap water is not filtered**, it contains **polluting substances which can then enter the body via percutaneous absorption** (passive diffusion of pollutants through the skin to the blood; Guy & Hadgraft, 1985 ; Jamoule JC 1988; Marty J.P. 1993)! Thus, there is a **potential of 500 potentially toxic molecules**, due to the reactions of chlorine and organic matter present in tap water (Prof. UCL Alfred Bernard), **which can be absorbed during baths or showers through the skin.**
- **Filtered water protects you by greatly reducing this type of insidious pollution!**



Dynamized
Technologies s.a.

DYNAMIZED TECHNOLOGIES ANALYSIS DECEMBER 2022

BELGIAN TAP WATER SITUATION



- **In December 2022, Dynamized Technologies** therefore had a Belgian independent accredited laboratory (Euraceta - Eurofins) **analysis of 310 pollutants** (heavy metals, pesticides, drugs, plasticizers, phthalates, chlorine etc.) in **legally drinkable tap water in Belgium**, i.e. significantly more than the number of parameters on which city water distribution companies provide information! This analysis confirms that **tap water nevertheless contains several tens of residual pollutants whose concentration rates are higher than the legal limits!** (according to the European Directive 2020/2184 on the Water Intended for Human Consumption) **or exceed the accepted precautionary thresholds (maximum health values) due to the sanitary caution that makes us consider filtered pesticide metabolites as relevant.** These pollutants could therefore not be filtered by city water treatment plants. This is worrying given that some of them are endocrine disruptors that may eventually cause (through chronic consumption) **a sanitary risk.**



CONCLUSIONS BELGIAN TAP WATER ANALYSIS AFTER TREATMENT



- After the filtration & dynamization of the water by the **Biofilter and Biodynamizer, several residual pollutants are neutralized** (their concentration decreases below the legal concentration thresholds of the EU Drinking Water Directive or the health caution thresholds for these pollutants which can be considered relevant) which allows city water **to become again, for parameters in excess, legally drinkable water!**
- This analysis confirms that the combination of the Biofilter (filtration) + Biodynamizer (dynamization) clearly leads to a **very broad spectrum of water purification.**

RESULTS OF THE BELGIAN TAP WATER AFTER TREATMENT

20 Pollutants in µg/L	% of filtration of the Biofilter & Biodynamizer
Chloroform (chlorine)	< 99%
Copper (heavy metal)	< 99%
Chlorine	< 95%
Chloridazone-methyl-desphenyl (herbicide)	> 91 %
Chloridazone-desphenyl (herbicide)	> 91 %
Chlorthalonil M 12 (foliar fungicide)	> 91 %
Metolachlore ethanesulfonic acid (herbicide)	> 91 %
Metolachlor NOA 413173 (herbicide)	> 91 %
2,6-Dichlorobenzamide (fungicide & herbicide)	> 91 %
Atrazine-desethyl-deisopropyl (herbicide)	> 91 %
Desethyl-atrazine (herbicide)	> 91%
Dimethachlor CGA 369873 (herbicide)	> 91 %
Metazachlore acide ethanesulfonique (herbicide)	> 91 %
Aphtiria (parasiticide)	90%
Aluminium (heavy metal)	< 87%
Iron (heavy metal)	< 87%
Nickel (heavy metal)	> 84%
Lead (heavy metal)	= 83 %
Perchlorates (chlorination residues)	> 64%
Chlorates (herbicide, inorganic pesticide)	= 14%





DYNAMIZE

THE 3 BASIS PRINCIPLES OF WATER DYNAMIZATION

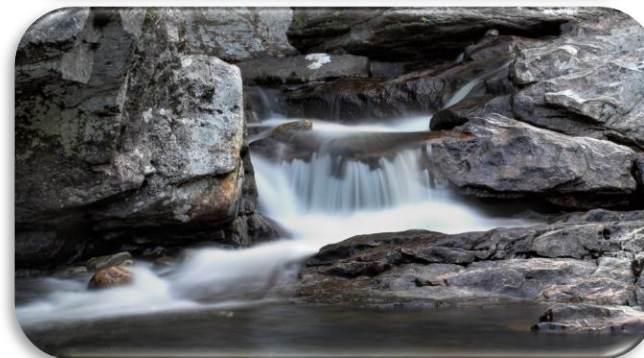
① **THE NATURAL VORTICES :**
the natural movement of water in nature is the **vortex** (vertical and longitudinal vortices)



② **THE MAGNETISM :**
The Earth is a **magnetosphere** whose magnetism is communicated to water & minerals

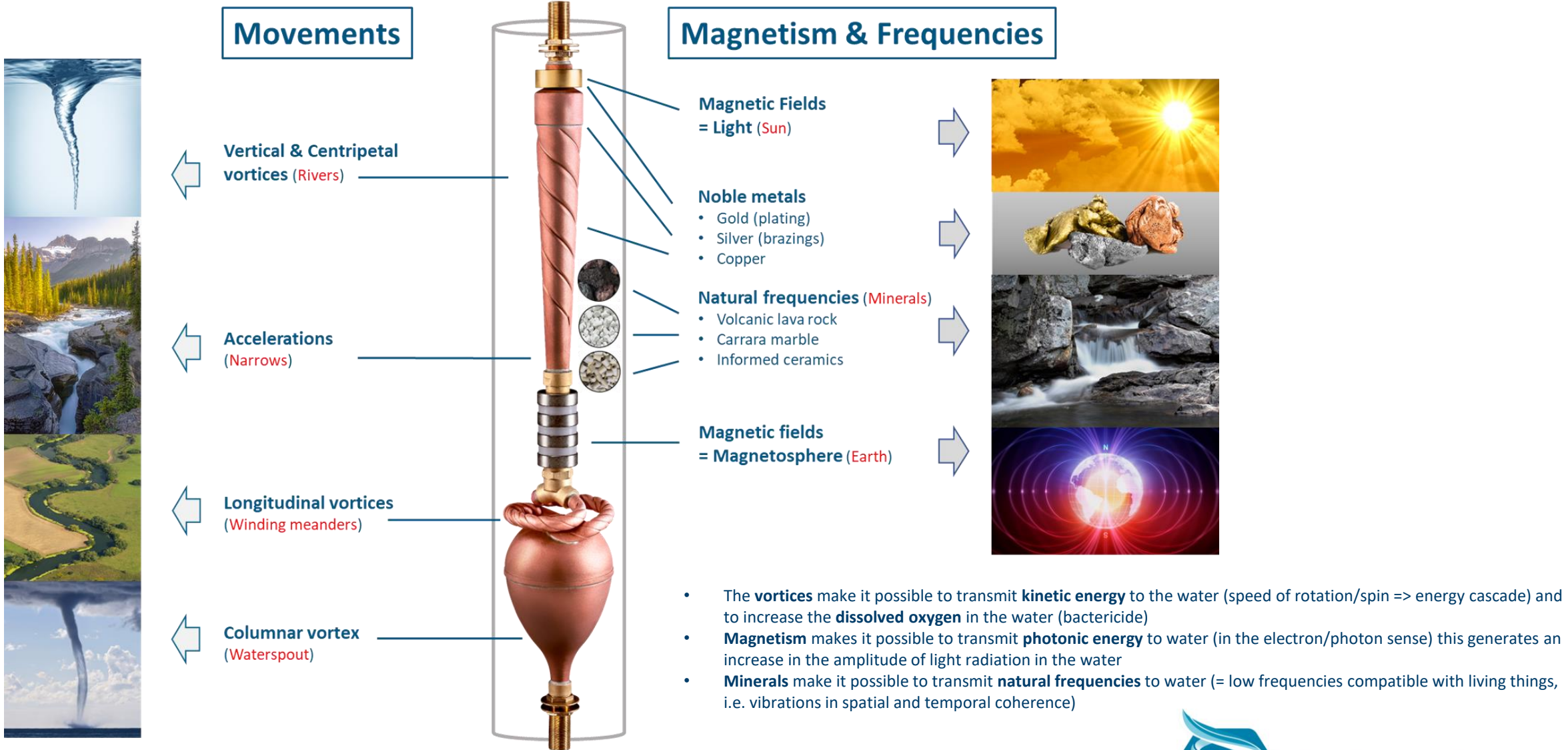


③ **NATURAL MINERAL FREQUENCIES :**
Water captures the energies of **minerals**





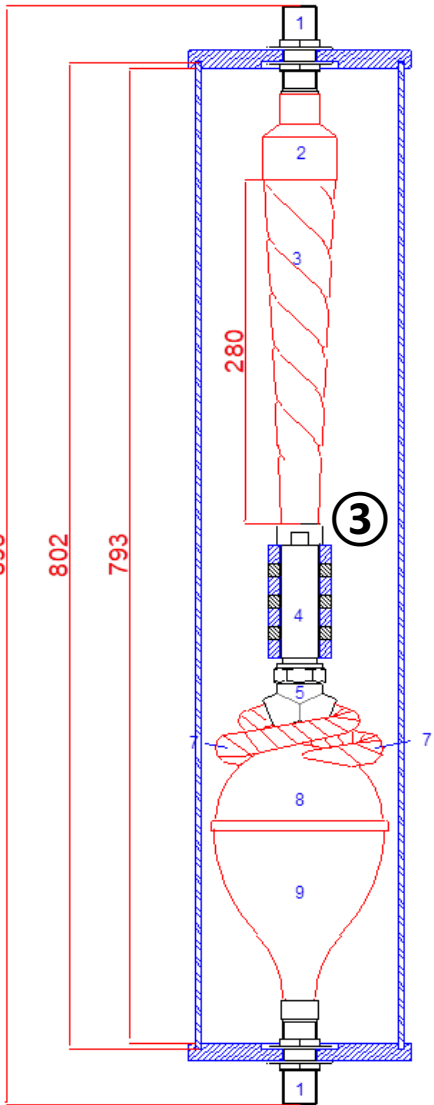
BIOMIMETISM: INSPIRED BY NATURE TO REGAIN THE NATURE OF WATER



- The **vortices** make it possible to transmit **kinetic energy** to the water (speed of rotation/spin => energy cascade) and to increase the **dissolved oxygen** in the water (bactericide)
- **Magnetism** makes it possible to transmit **photonic energy** to water (in the electron/photon sense) this generates an increase in the amplitude of light radiation in the water
- **Minerals** make it possible to transmit **natural frequencies** to water (= low frequencies compatible with living things, i.e. vibrations in spatial and temporal coherence)



TRANSMISSION OF NATURAL MINERAL FREQUENCIES



- The aquifer part is entirely surrounded by minerals from nature :
- **Volcanic lava stone** (found in the earth's crust),
 - **White marble** (found in mountain rivers),
 - **Ceramics informed by efficient micro-organisms (EM)*** which emit **infrared frequencies** compatible with living things; product certified authentic by EMRO



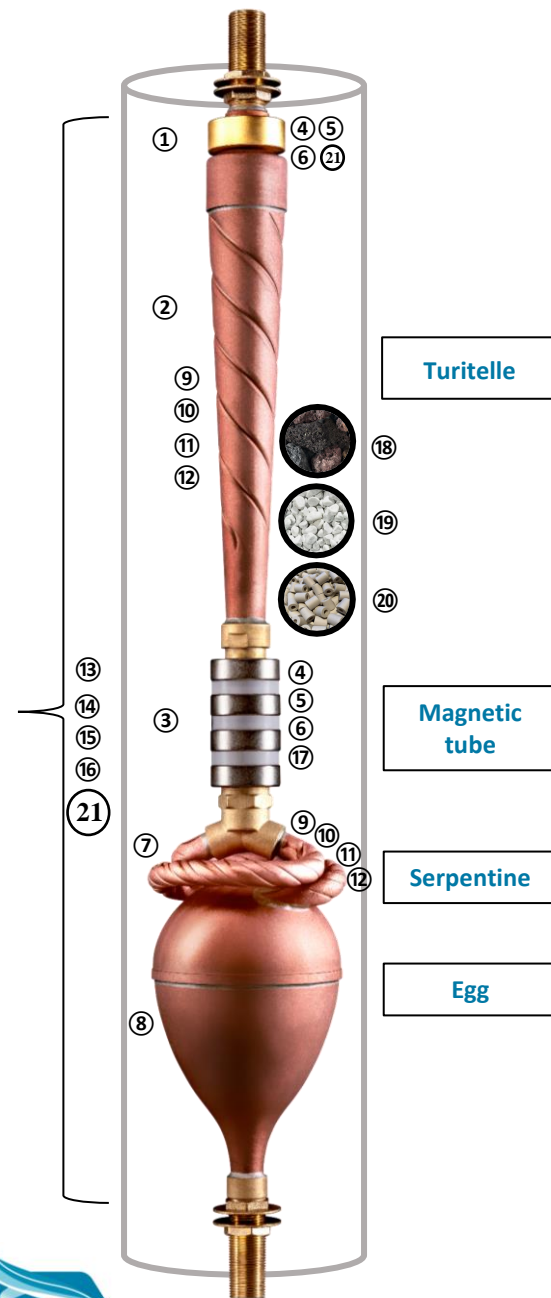
*Clay (composed of 80% silica, SiO₂) mixed with several complementary strains of bacteria that ferment in clay, fungi and natural yeasts (EM's). These EM's emit far infrared waves favorable to life and water. The clay is then heated at +/- 1,300 ° C and becomes ceramic which contains the natural frequencies emitted before heating by the EM's. These vibrations are then transmitted to the water (invention of Prof. Dr. Teruo Higa).





THE 21 DYNAMIZATION PRINCIPLES APPLIED IN THE BIODYNAMIZER

- ① • **1 Ring-shaped gold-plated permanent magnet** with specific orientation of magnetic fields. This magnet "*neutralizes*" any type of "*contaminating molds*"* by polarizing the water molecules which are dipoles (*meaning the electromagnetic signals (EMS) of the pollutants remaining in the water, stored in its molecular nanostructures). This magnet transmits magnetic energy to the water (in the form of magnetic waves)
- ② • **Turitelle: Centripetal funnel** with triple **levorotatory** (anti-clockwise) **and vertical vortices** that accelerate the water and transmit kinetic energy to it, i.e. implosion energy. This funnel reproduces the vortices of the rivers generated by the Coriolis forces
- ③ • **Magnetic tube** whose flow of swirling water is exposed to 4 nickel-plated permanent magnets with magnetic fields of specific orientation in order to treat limestone by conjunction of the venturi effect (accelerations of water) and magnetic fields. These magnets transmit magnetic energy to the water (in the form of magnetic waves) which is amplified thanks to the vortexing movements of the water which reach their peak at this point.
- ④ • The magnets have different **volumes** (different amounts of matter which influence magnetization gradients)
- ⑤ • Different **axes** of magnetization
- ⑥ • The magnets are made of an **alloy of natural rare earths (neodymium)** which generate greater magnetic intensity
- ⑦ • **2 serpentines** which accelerate the water by **double horizontal** (radial/longitudinal) and **dextrorotary** (clockwise) vortices, reproducing the meanders of rivers in which longitudinal vortices are generated by the stones present in their beds
- ⑧ • **Egg ending in a hyperbolic funnel** in which a **columnar vortex** with dextrorotatory orientation and constant diameter is generated. It's a cylinder of air and vaporized water that flows in free flow without friction with the walls (extremely rapid rotation around its axis producing thousands of vortices, ultimate kinetic energy, in the center of a mass of water which surrounds it at its periphery and whose it causes rotation in the same direction but much more slowly). The hydrodynamics of the columnar vortex allows for increased transfer and uptake of dissolved oxygen in rotating water. This vortex replicates a waterspout (which is a column of air mixed with water)
- ⑨ • The vortices are generated **mechanically**, by the pressure of city water = +/- 3 bars (without electricity which generates electromagnetic pollution)
- ⑩ • The vortices have **levorotatory** (anti-clockwise in the funnel) and **dextrorotatory** (clockwise in the coils and egg) rotations
- ⑪ • The vortices have **vertical** (in the funnel and egg) and **horizontal** (in the serpentine) rotations
- ⑫ • Vortices have **centripetal** (funnel) & **constant** (serpentine & egg) **circular** rotations
- ⑬ • The shapes of the Biodynamizer alternate moments of **high and low pressure** (during the accelerations-decelerations of the water generated by the shapes of expansions-contractions of its different parts). Hydrodynamic cavitation phenomenon observed a.o. in the columnar vortex
- ⑭ • The aquifer part in contact with water is composed of **materials compliant with water intended for human consumption** (WIHC) which are **bactericidal**:
 - **copper** = bactericide
 - **brass** (copper + zinc) = bactericide
 - **silver** = bactericide (for all brazing of the 10 metal parts of the Biodynamizer)
- ⑮ • The **amplitude** of the dimensions of the Biodynamizer (H= 802 mm) & its very **smooth internal surface state** produce a high speed & kinetic energy (venturi effect)
- ⑯ • All **interior shapes have rounded corners** to allow a very fluid flow of water as in nature
- ⑰ • **Interactions between mechanical vortices & magnetic fields** which amplifies magnetic energy
- ⑱ • Transmissions of natural frequencies of dynamization:
 - Transmissions of natural mineral frequencies which are not in contact with water:
 - **Volcanic Lava Stones**,
 - **Carrara marble** pebbles,
 - **Ceramic informed** by effective micro-organisms (EM's, EMRO certified) which transmits infrared frequencies (low frequencies) to the water
 - Transmission of **subtle energy frequencies** :
 - **Gold**: the 1st ring magnet is 24 carat gold plated "Au" which transmits the high frequency of dynamization to the water
 - **Shape waves** emitted by the proportions respecting the golden ratio Phi (1-1.618) found in:
 - ✓ The **number of complete turns of the funnel vortices** inspired by the golden ratio, i.e. 3×1.618 complete turns,
 - ✓ The dimensions of the **pentagonal Egg** and its hyperbolic funnel which respect the proportions of the golden ratio,
 - ✓ The slope of the 2 outlet pipes of the "Y" shape that respects the **golden angle** ($137.5^\circ = 360^\circ - 360^\circ * 0.618$)
 - ✓ The **dimensions (diameters and height) of the ring magnets** which respect the proportions of the golden ratio (1-1.618)



TECHNICAL CHARACTERISTICS OF THE BIODYNAMIZER

- **Mechanism:** mechanical vortices & magnetic fields & natural mineral frequency transmissions
- **Maintenance:** no maintenance, no consumables
- **Flow rate:** 3.5 m³ / hour (58 L / min) at 3 bars
- **Operating pressure:** min 3 bars - max 6 bars. The metallic aquifer part of the device is resistant to pressures up to 80 bars and complies with European Directive 97/23 / EC on pressure equipment
- **Certificate for Conformity of the metals in contact with water issued by Eurofins:** All materials in contact with water (copper & brass & silver) have sanitary compatibility in accordance with the French decree of 25.06.2020 relating to metallic materials and products intended for production, distribution and packaging installations which come into contact with water intended for human consumption.
- **Certificate of compliance in terms of the release of metals (copper, zinc, silver) into water intended for human consumption** after passing through the Biodynamizer issued by **Buildwise** (ISO 9001 certified) on 19.12.2022 which confirmed that the concentrations of metals (copper, zinc, silver in mg/l) in the water do not exceed the European legal standards (EU DIRECTIVE 2020/2184 OF THE EUROPEAN PARLIAMENT AND OF THE COUNCIL of December 16, 2020 relating to the quality of water intended for human consumption) and Belgian standards (Appendix XXXI, Part C indicator parameters, of Book II of the Environmental Code constituting the Water Code) in terms of concentrations after direct sampling and after residence time of 1 hour, 24 hours, 48 hours and 3 weeks in the Biodynamizer
- **Certified conform by Belgaqua according to standard EN1717** (protection in accordance with VIV0442023 - Conform, provided that a non-return valve is installed upstream of the Biodynamizer on the water pipe)
- **Tightness test certificate:** each Biodynamizer is tested at a pressure of 10 bars for 3 minutes under water to check its tightness
- **Legal warranty** (2 years)
- **Fittings:** ¾ 'inch (outer Ø 26.4 mm, inner Ø 18 mm)
- **Dimensions:** length + fittings: 90 cm x outside Ø cylinder : 16 cm, weight: +/- 19 kg
- **Placement:** the device must be connected to the pipes via dielectric hoses (multiskin) after the meter of the city water distribution network delivering drinking water and this at more than 80 cm from an electrical source (arrival of the main electrical supply of the house, electrical panel, photovoltaic inverter, etc.)



Biodynamizer®
Enjoy the natural movement of life



INNOVATION AWARD AT SIRHA 2021 !

WINNER

**SIRHA+
INNOVATION
AWARDS**

Salon International de la restauration,
de l'hôtellerie et de l'alimentation





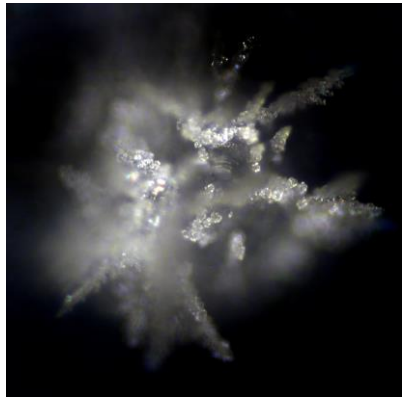
Dynamized
Technologies s.a.

SOME ANALYZES REALIZED BY DYNAMIZED TECHNOLOGIES ON DYNAMIZED WATER:

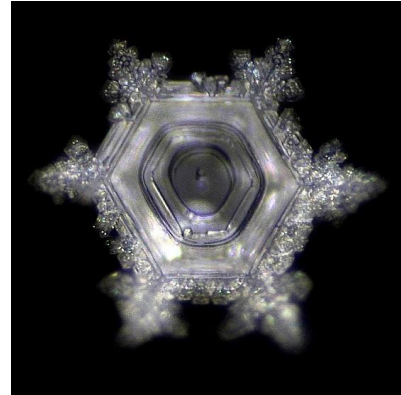
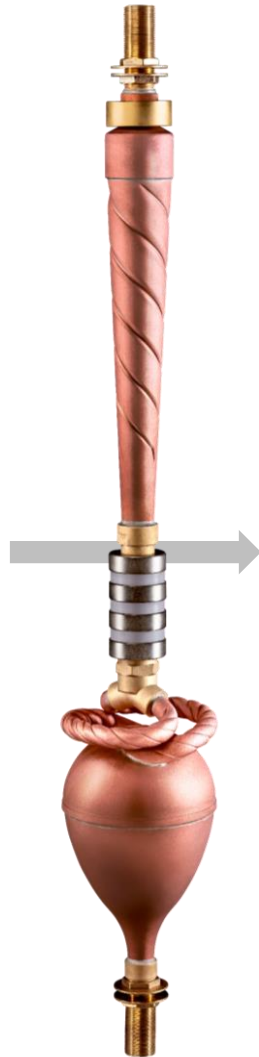


WATER CRYSTALS FROM DYNAMIZED WATER

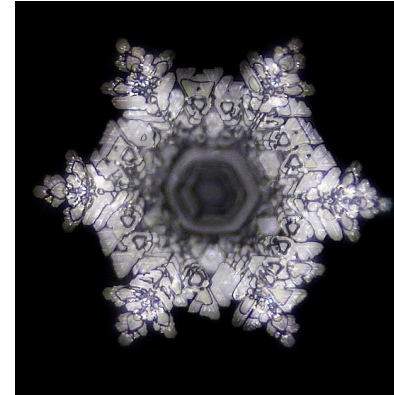
Analysis done on september 2016 & july 2019 / E. Braun



Tap water crystal



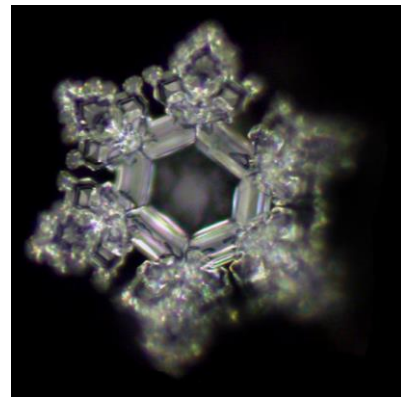
Dynamized tap water crystal
from France



Dynamized tap water crystal
from Belgium



Dynamized tap water crystal
from Switzerland



Mountain water crystal
from the Swiss Alps

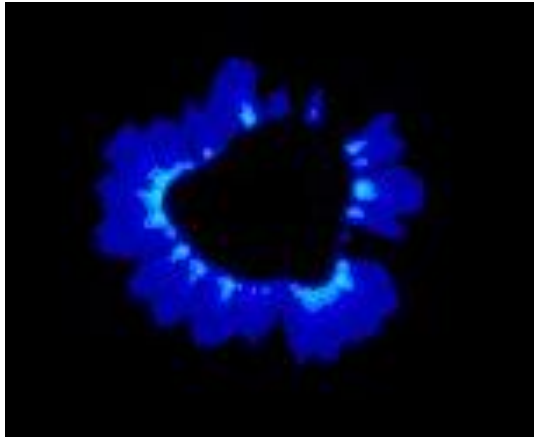
Comparison of a tap water crystal > < 3 dynamized tap water crystals from 3 different countries (Rhode St. Genèse in Belgium, Brens in France & Uttigen in Switzerland) => **The hexagonal crystalline structure** of dynamized water (6 branches structured in a fractal way and whose superstructure is symmetrical, regular and redundant) is equivalent to that of **mountain water!**



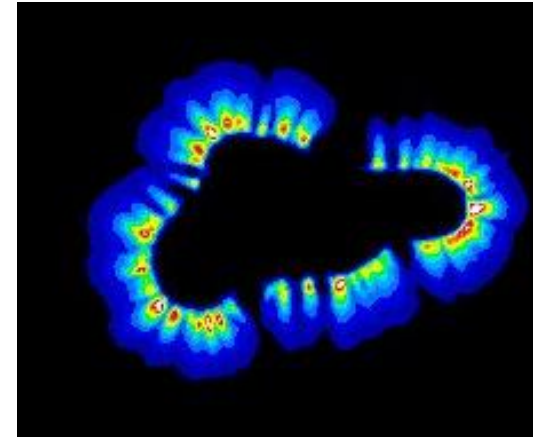
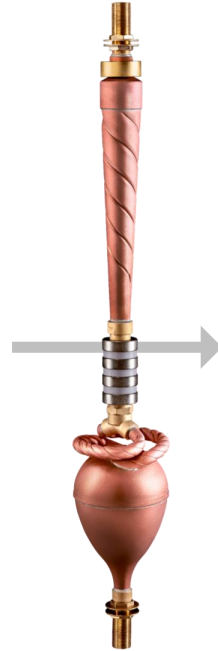
Biodynamizer®
Enjoy the natural movement of life

THE ELECTROPHOTONIC CAMERA: ENERGY & SURFACE TENSION

Electrophotonic analysis carried out by the Coramp laboratory (macroscopic imaging by corona effect) on 07/09/2019, the electrophotonic photos of which are processed by scientific image processing software developed by Raymond Herren, an electronics engineer from the CNRS (National Scientific Research Center, France) / + Mathematical and statistical expertise of Prof. M. Henry on 08/29/2019



*Tap water: Spherical shape of the water drop
Less intensity and light radiation (crown & streamers)*



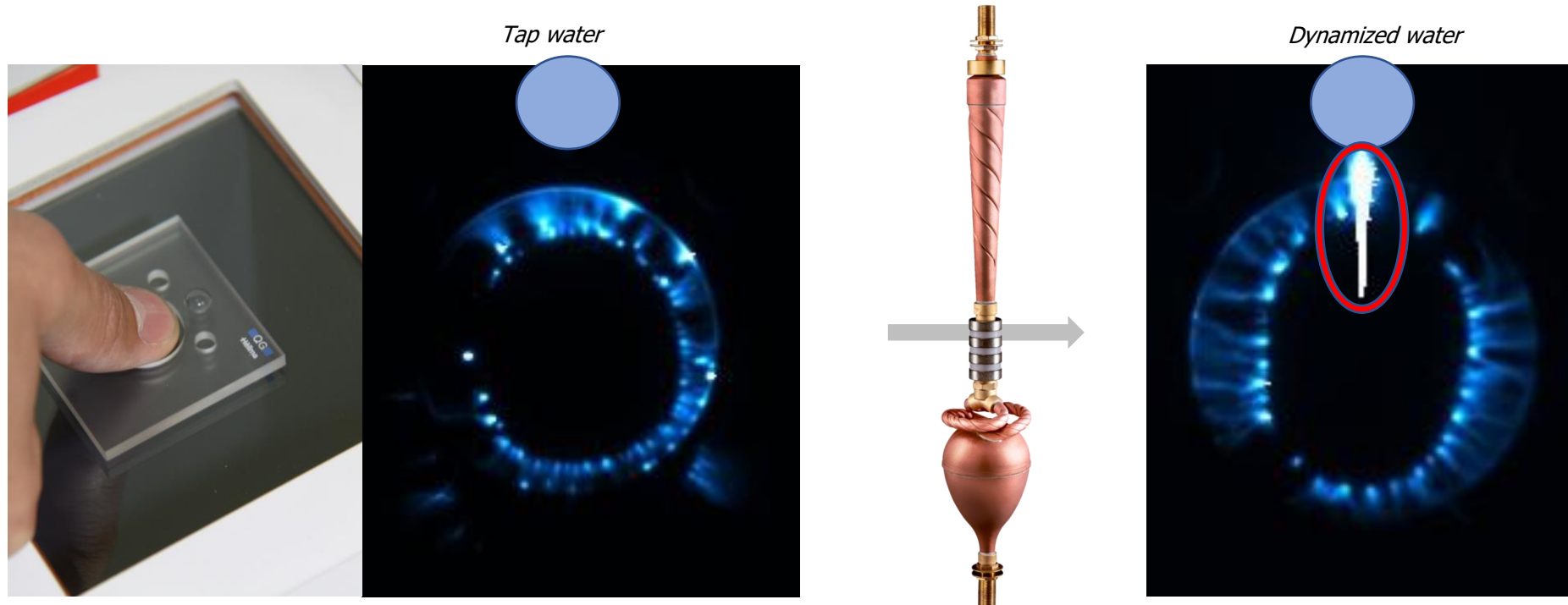
*Dynamized water: Spreaded shape of the water drop
More intensity and light radiation (crown & streamers)*

The electrophotonic camera photographs the **bioluminescences** (streamers) in water (capture of photons present up to 10,000 photons / pixel which can be converted into energy / joules) and notes for **dynamized water**:

- A **more spread form of the drop of water** on the electrode indicating a **lower surface tension** of the water
- **Significantly greater photon emission** (light / energy) in terms of **quantity, intensity and amplitude of light radiation**. It is also interesting to know that photons would be involved in cellular growth and intra and intercellular communication as well as in microbial infections!



THE ELECTROPHOTONIC CAMERA: PHOTONIC BRIDGES



The electrophotonic camera observes a significant **increase in the energetic biocompatibility** (*“energetic affinity”* in terms of **occurrences and quantity of energy transmitted**) of dynamized water with regard to living organisms. This is illustrated in the photo above by the **“photonic bridges”** between the water receptacle and the finger. The photonic bridges induced by dynamized water are :

- **Produced in 100% of the cases on 20 fingers** (which is not the case with tap water)
- **Significantly larger and more intense** (often even penetrating the very interior of the receptacle on which the fingers are placed as seen in the photo on the right above); phenomenon never observed before by the electrophotonic camera in 10 years of existence

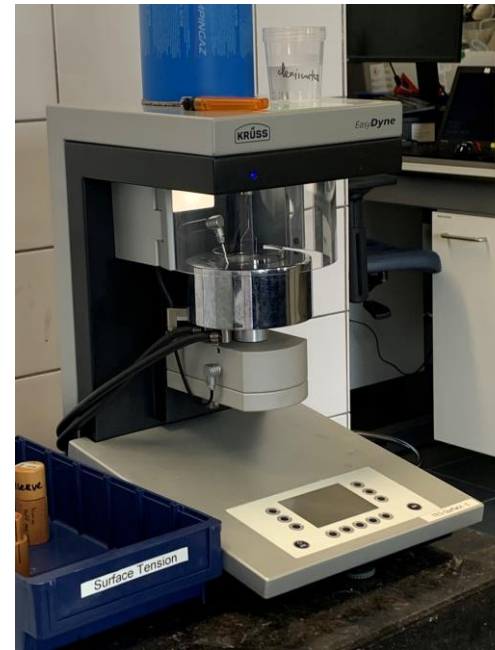
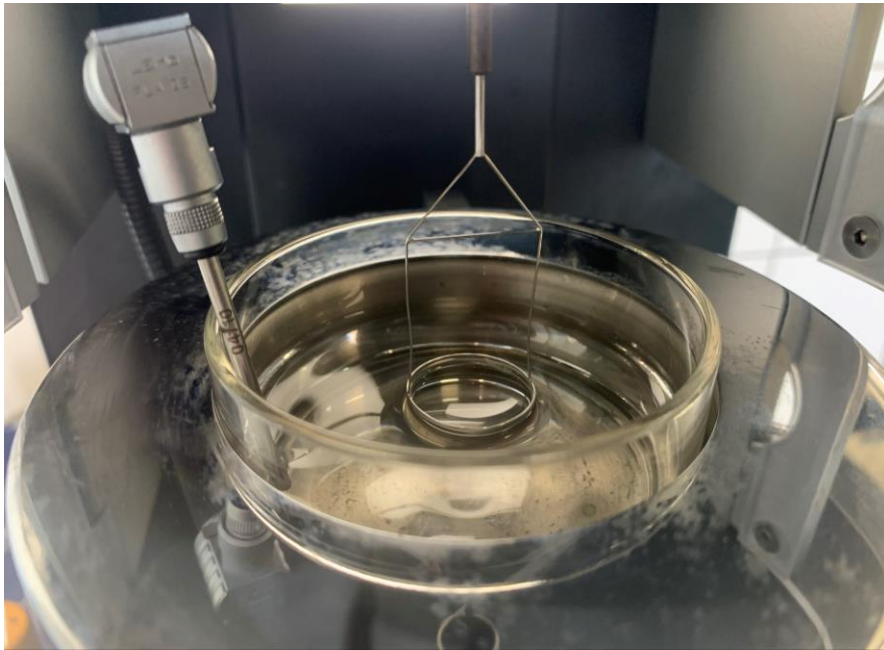


ANALYSIS OF THE SURFACE TENSION OF DYNAMIZED WATER

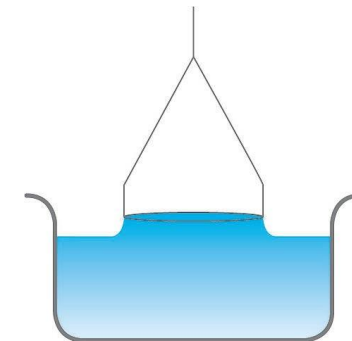
Analysis carried out according to international standards the 22nd of July 2021 by the SGS laboratory in Rotterdam (Krüss Easy Dyne device)

Comparison of the surface tension of dynamized and non-dynamized tap water from Rhode Saint Genèse (Belgium). After analysis, it turns out that the water dynamized by the Biodynamizer has a **lower surface tension of -15%** compared to non-dynamized water (66 dynes / cm -> 56 Dynes / cm or mN / m at 20 ° C and measured according to ASTM D1331).

The **platinum ring tear-off method** measures the surface tension of water: The ring is submerged and then pulled upward until it crosses the surface of the liquid. The lamella is overstretched until it breaks and gives the measure of the surface tension of the water.



SGS



Biodynamizer®
Enjoy the natural movement of life

THE SURFACE TENSION OF WATER AND CELLULAR HYDRATION



Knowing that a **lower surface tension** has a more “*wetting*” power which **optimizes the penetration of water into the cells** and therefore allows **better cellular hydration** (this occurs via aquaporins through which +/- 1 billion molecules water enter the cell one by one and every second).

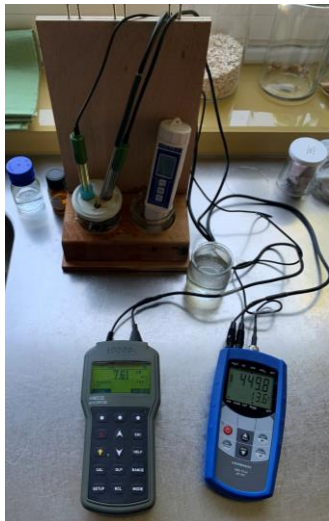
This better hydration helps **eliminate toxins and metabolic waste and therefore detoxify the body.**

"If nutrients cannot enter the cells because of the high surface tension of the water, then the cells dehydrate and die from the accumulation of their own wastes" Nobel Prize winner Alexis Carrel.



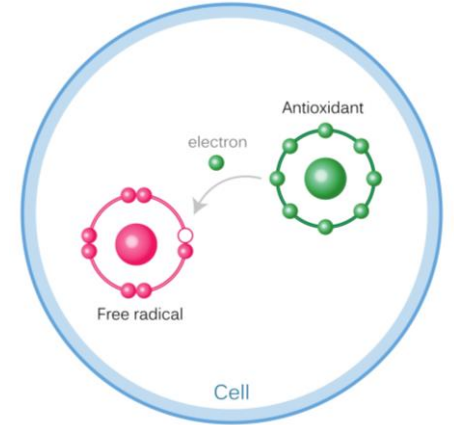
BIOELECTRONICS OF VINCENT (BEV) ANALYSIS

pH (proton analysis) & rH2 (electron analysis) ; BEV analysis (Bioelectronic of Vincent analysis using Hanna Instruments calibrated electrodes and the formulas of Professor Joseph Orszagh researcher at the University of Mons-Hainaut in Belgium, carried out by Sylvie Henry Réant, ENSCP Chemical Engineer, Master 2 Biology, in Rhode Saint Genèse (Belgium) on 19.05.2020



BEV analysis confirms that the Biodynamizer :

- **reduces very significantly the oxidation potential of water**
- **increases the surplus of electrons available in the water and therefore helps to fight free radical,**
- **makes it possible to increase the electronegative charge in the water (as reducing water) which should make it possible to better metabolize the nutrients and promote cellular detoxification,**
- **transforms the ionic form of inorganic minerals into colloidal form which should facilitate their evacuation rather by the stools (intestinal) than by the urine and avoid overloading them,**
- **preserves much better the energy in water**



Biodynamizer®
Enjoy the natural movement of life



MUSTARD SEED GERMINATION TEST

Analysis carried out 3 x in October, November and December 2020



Non dynamized water

Dynamized water

- Parameters of the analysis carried out 3 times:
 - Identical amounts of seeds
 - Identical watering 2 x / day
 - Identical light & heat exposure
- Findings in favor of dynamized water:
 - Earlier germination start
 - Ever larger volume
 - Bigger, more developed germs
 - Maturity faster
 - A greener set



Biodynamizer®
Enjoy the natural movement of life

Comparative observations of 2 groups of cows

Conclusions of the observations made between 2019-2021:

Comparative observation of 2 groups of +/- 60 cows (Warzée farm in Hamois, Belgium), on equal feed in quantity and quality, in stalls all year round, one of which drinks dynamized water and the other does not induce following observations in the group drinking filtered water dynamized by the Biodynamizer:

-  **23% Water consumption,**
-  **20% Milk production (and a proportional increase in fat and protein)**

Water consumption	Non - dynamized water	Dynamized water	Δ (%)
From June to Sept.2020	62,11 L/cow/d	76,63 L/cow/d	+ 23 %

Milk production	2019 (non-dynamized water)	2021 (dynamized water)	Δ (%)
Milk (L)	24,20	29,01	+ 20 %
Fat (Kg)	0,95	1,13	+ 19 %
Protein (Kg)	0,81	0,98	+ 21 %





Dynamized
Technologies s.a.

LIMESCALE MANAGEMENT

THE BIODYNAMIZER: AN INTELLIGENT LIMESCALE MANAGEMENT

- Limestone in tap water will **not be removed** by the Biofilter® neither the Biodynamizer®, as a softener can do.
- Scale therefore remains **present and visible** in dynamized water. On the other hand, the **Biodynamizer will restructure** it (change its crystalline structure) in order to reduce its disadvantages. The structure of the tartar changes (from calcite to aragonite), it becomes **softer and more soluble** (fine white powder which is evacuated more easily) and will become **much less encrusted**, which will facilitate the maintenance of household appliances. and prevent the pipes from clogging.



Pan test: restructuring of the limestone after boiling, comparison between tap water (left) and dynamized water (right)



Dynamized
Technologies s.a.

COSTS AND PLACEMENT

SAVINGS FROM DEVICES (BIOFILTER + BIODYNAMIZER)

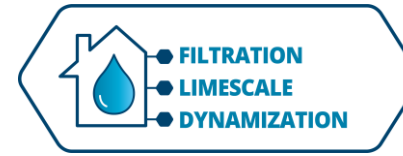


Savings DYNAMIZED WATER << COST OF BOTTLED MINERAL WATER	
Devices amortized in 4 years	
Savings of +/- € 20,000 over 20 years	
Savings DYNAMIZED WATER << COST OF BOTTLED MINERAL WATER & SOFTENER	
Devices amortized in 2 year	
Savings of +/- € 27,000 over 20 years	
Savings DYNAMIZED WATER (devices financed via mortgage loan) << COST OF BOTTLED WATER & SOFTENER	
Devices immediately amortized	
Monthly savings of +/- € 95	
Savings of +/- € 22,000 over 20 years	





THE SIMPLICITY OF A GLOBAL SOLUTION



The Biofilter and the Biodynamizer are **placed by any plumber** or professional sanitary installer just after the city water meter. It takes a space of +/- 1 m² to place them.

GLOBAL SOLUTION:

- ✓ Purified water
- ✓ Intelligent limescale management
- ✓ Dynamization of water: restructuring & energization

SIMPLICITY :

- ✓ Placement by any professional plumber
- ✓ Standard measures (3/4 " brass fittings: outside Ø 26,4 mm - internal Ø 18 mm)
- ✓ The devices operate without electricity, without draining water and without the use of salt or chemical agents (only the filter cartridge must be replaced every 150m³ and max every year)
- ✓ Biodynamizer: **No maintenance, no consumables**
- ✓ **In the event of a move, you take it back with you!**



Biodynamizer®
Enjoy the natural movement of life



Dynamized
Technologies s.a.

IN CONCLUSION

YOUR BENEFITS THANKS TO THE BIOFILTER & BIODYNAMIZER



← Purified water



← A sweet and round taste



← A global solution



← An ecological solution

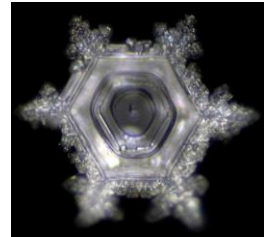
← An economic solution



More hydrating and less oxidizing water →



Restructured water with more energy →








Intelligent limescale management →



Biocompatible water for the whole family →



COMPARATIVE TABLE OF DIFFERENT WATER QUALITIES

Comparative types of water		Chlorine	Pollutants	Minerals	Sodium	Limescale treatment	Heavy metals	Structure (molecules)	Energy (photons)
	Filtered & Dynamized water 	+	+	+	+	+	+	+	+
	Bottled water	+	+	○	+	NA	+	○	○
	Tap water	-	○	○	+	-	○	○	○
	Softened water	-	○	-	-	+	○	○	○
	Osmosis water	+	+	-	+	NA	+	-	-

NA = Not applicable

CONTACTS

DYNAMIZED TECHNOLOGIES s.a.

Dynamized Technologies s.a.

Sentier Muraes 10, 1440 Braine le Château, Belgium

VAT nr: BE 0646.898.542

www.biodynamizer.com

team@biodynamizer.com

