



PLACEMENT INSTRUCTIONS — TO READ BEFORE STARTING !

- It is strongly recommended to call a **professional** for the installation of the devices.
- **First install the Biofilter and then the Biodynamizer** after the city water meter or after the main water supply to your home (legally drinkable water according to the local legislation in force in the country where the filter is installed). For the European Union this corresponds to the “European Drinking Water Directive 98/83CE 1998”) and attach them **vertically** to a hard & resistant wall (bricks, concrete, etc.) with a valve upstream of the Biofilter and a valve downstream of the Biodynamizer.
- The Biofilter and the Biodynamizer can only be connected to the **cold-water** network!
- Given that the Biodynamizer pipes are made of copper and brass, the customer will ensure, under their own responsibility, to run water with a **pH (degree of acidity) greater than 6.5 and a hardness greater than 15 °f (French degrees) or 150 ppm**, otherwise there is a risk of corrosion of the pipes and leaks or ruptures. It is also important to prevent it from containing **abrasive sediments** (sand, sludge, etc.) which could erode the Biodynamizer pipes.
- Be sure to connect the devices professionally and **comply with the specific installation standards in force in the country of installation**.
- The **fittings** of the 2 devices are made of **¾ inch threaded brass**. Where applicable, use discounts.
- Check that the materials constituting the pipes of the internal sanitary network (existing sanitary pipes to which the filtration and dynamization devices are connected) comply with local technical and health regulations relating to interior sanitary installations (for Belgium <http://www.belgaqua.be/>). And in particular that these pipes are not made of **lead**, or any other metal dangerous to health.
- Check that there is **no softener** (salt or CO₂ or other) **or any other water treatment device upstream** of the Biofilter and Biodynamizer.
- If the dynamized water is to supply a **swimming pool**: check with the swimming pool specialist the compatibility of the swimming pool filtration system with filtered and dynamized water which is **unsoftened water**.
- If the tap water is likely to contain sludge, particles, sediments or other, we recommend protecting the Biofilter upstream with a **particle/sediment prefilter** in order to protect and extend the longevity and effectiveness of the Biofilter.
- If your city water contains **more than 40°f hardness** (French degrees - very hard water) **400 ppm**, then it is advisable to provide additional limescale treatment adapted to this situation (for example our **Biolimescaler** which is **placed between the Biofilter and the Biodynamizer**: in this case provide a **non-return valve** after the Biolimescaler).
- The operating pressure of the devices is between **3 and 5 bars max**. If applicable, be sure to place a pressure reducer after the water meter and before the devices. This reducer must be set to max 5 bars.
- Since water filtration and dynamization devices do not soften the water, it is important to carry out **standard annual maintenance of boilers and waterheaters** (heat to be set between **40°C-max 55°C**)!
- Check that the devices will be placed in a place **protected from frost** (cellar, garage, etc.) ; Recommended temperature: between 1°C >> 50°C)





PLACEMENT INSTRUCTIONS — TO READ BEFORE STARTING !

- **Close the general valve of the city water meter** and empty the installation
- Check that there is a non-return valve after the city water meter as well as a pressure reducer (set to +/- max 5 bars)
- Place the devices **vertically** (for the Biodynamizer, the “Waterflow IN” inlet connection above and the “Waterflow OUT” outlet connection below; **for the Biofilter, respect the direction of the water flow using to the arrows provided for this purpose**).
- Placement > 80 cm from possible sources of electromagnetic pollution (electrical incoming cable, electrical panel, photovoltaic inverter, etc.)
- Be sure to reserve **sufficient space around the Biofilter in order to be able to replace the cartridge at the appropriate time** (cartridge capacity 150 m3 or max 1 year). Minimum 40 mm free under the Biofilter housing.
- Place **valves with purger before the Biofilter & after the Biodynamizer**
- Fix the wall hooks of the 2 devices with suitable plugs and screws on a sufficiently supporting wall considering the weight of the devices (Biofilter: +/- 7 Kgs, Biodynamizer: +/- 19 Kgs + 2.2 L of water = 21.2 Kgs)
- **Connect the devices:**
 - Be sure to connect the devices with multi-layer dielectric pipes (**multiskin**) such as **Alpex** (Aluminium/Pex, preferably Ø 26 x 3 mm to avoid pressure losses) or **copper** or **galvanized steel** but then with dielectric fittings to avoid stray currents along pipes which can cause galvanic corrosion by electrolysis of the Biofilter and/or the Biodynamizer (the internal pipes of the Biodynamizer are made of copper, brass and silver and its fittings are made of brass):
 - ✓ making sure to have properly notched/scratched/grooved the male connections (inlet/outlet) so that the sealing thread (loctite 55 or equivalent) or hemp + kolmat or Teflon does not slip during connection
 - ✓ by checking that you have added seals(o-rings) in the female connections
 - ✓ by avoiding stray currents in the sanitary installation. To do this, be sure to connect the sanitary installation to the earth upstream of the devices (grounding)
 - **When connecting the Biodynamizer to the sanitary installation, be sure to use 2 clamps:**
 - ✓ **1 holding clamp** which allows you to immobilize the Biodynamizer fitting (be careful not to turn the Biodynamizer connection in an anti-clockwise direction otherwise you risk unscrewing certain internal parts and causing leaks!)
 - ✓ **1 clamp to tighten** (clockwise) the fitting of the Biodynamizer to the parts/pipes of the sanitary installation





PLACEMENT INSTRUCTIONS — TO READ BEFORE STARTING !

- For the Biofilter, check that the cartridge is well integrated into the housing and check the tightness of the clamp. To facilitate installation, the Biofilter housing can be installed on the support in two positions: inlet-outlet direction from left to right or from right to left.
ATTENTION! It is important not to confuse the water inlet and outlet of the Biofilter. The arrows on the black top of the Biofilter cap indicate the direction of water flow!
- Slide the Biofilter onto the wall hanger (guide rails) until the holes of the wall hanger and the Biofilter match. Place the black wing nut in its hole + check that the Biofilter clamp is sufficiently tight (by turning the black knob clockwise) to guarantee the tightness of the Biofilter.
- Biodynamizer: Fix the bracket in the desired location as well as the 2 clamps on the wall.
- Then place the Biodynamizer on the bracket and tighten the 2 clamps.
- Crimp and clean multiskin pipes
- **Indicate the placement date on the sleeve** of the Biodynamizer and take the packaging boxes
- Check all connections and tightness before commissioning the installation. If there is a leak, close the valves and repair the leaks.
- **Reopening of the valves: After having previously opened a tap in the sanitary installation downstream of the devices, you must then gradually open the valves: first the one upstream (before) the Biofilter. Let the 2 devices fill, then gradually open the valve downstream of the Biodynamizer**, this is to avoid producing too much sudden pressure in the pipes, which could have the consequence of loosening existing limescale particles inside the pipes, resulting in clogged pipes or taps!
- **Let the water run from a tap for 5 minutes** to purge the air in the devices and pipes (which makes the water cloudy-opaque for a few minutes = oxygen in the water which evaporates after a few seconds). This does not prevent you from drinking filtered and dynamized water.
- Never unscrew the connections without first closing the valves upstream and downstream of the devices.
- **All placements are made under the sole responsibility of the installer.**
- Then, all you have to do is enjoy this tap water which has been filtered and dynamized.



PLACEMENT INSTRUCTIONS BIOFILTER + BIODYNAMIZER



Pressure reducer not supplied



Pressure gauge (optional) not supplied



2 Valves with air vent not supplied



2 wall clamps + 2 x 2 screws + 2 studs & 2 plugs (supplied)



1 support bracket + 1 universal screw & 1 dowel (supplied)



Non-return valve (not supplied)



2 screws + 2 plugs for the Biofilter (supplied)

Photovoltaic inverter



Electrical panel



Main tube electrical supply

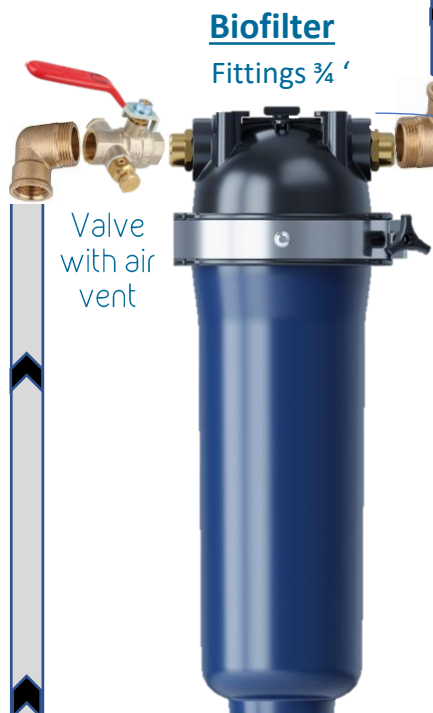
Grounding

Biolimescaler (optional)

> 80 cm

Biodynamizer

Brass fittings ¾"



Biofilter
Fittings ¾"

Valve with air vent

606 mm X 225 mm – **6,9 kg**

Multiskin Ø 26 x 3 mm

Pressure reducer
Max 5 bars



City water meter

Grounding

Non-return valve
(Legally obligatory for all sanitary installations!)

Wall Clamp

Support Bracket

Multiskin pipe



Brass fittings ¾"

Valve with air vent

Non-return valve if

Biolimescaler

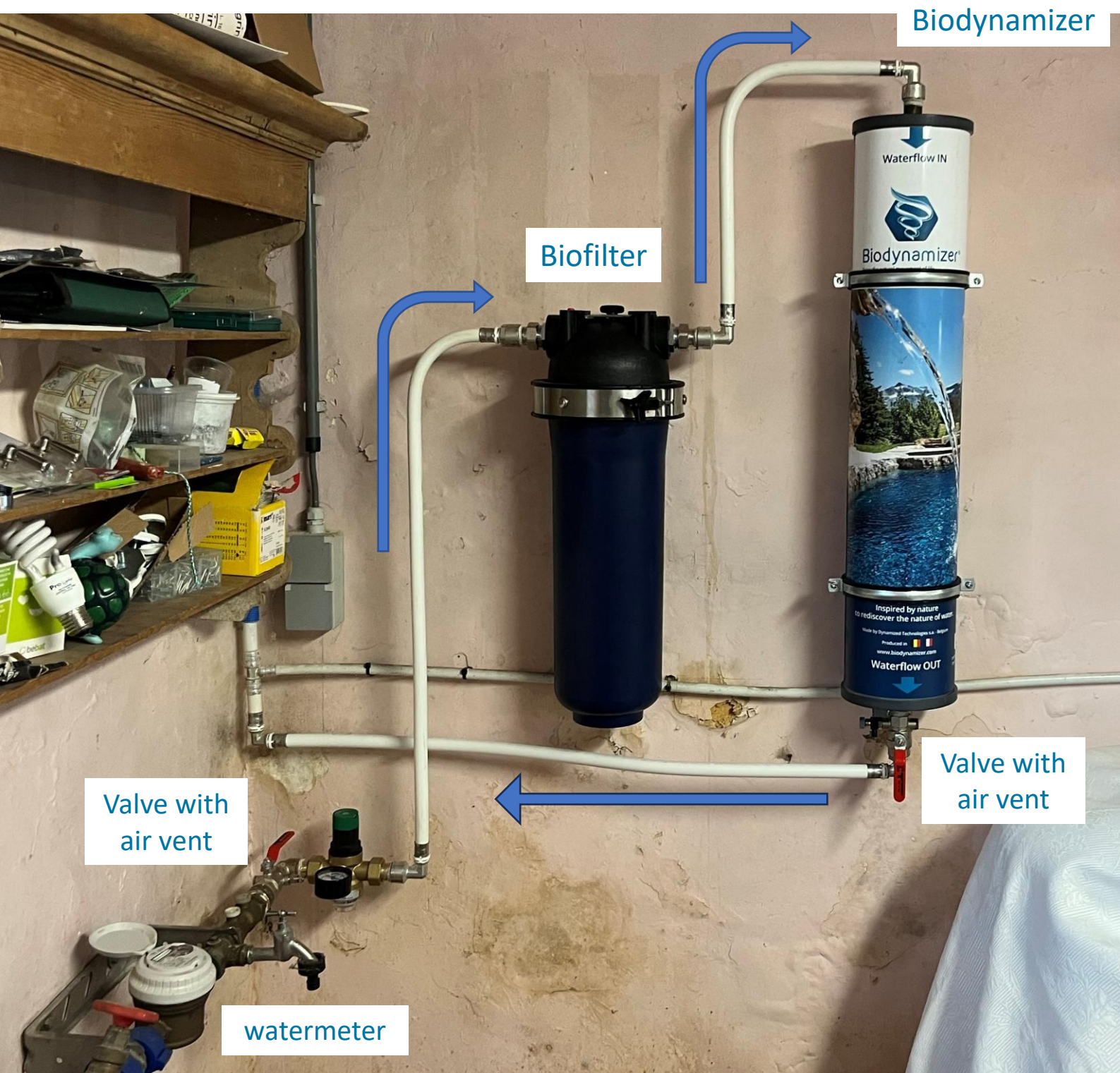
Biodynamizer®
Enjoy the natural movement of life



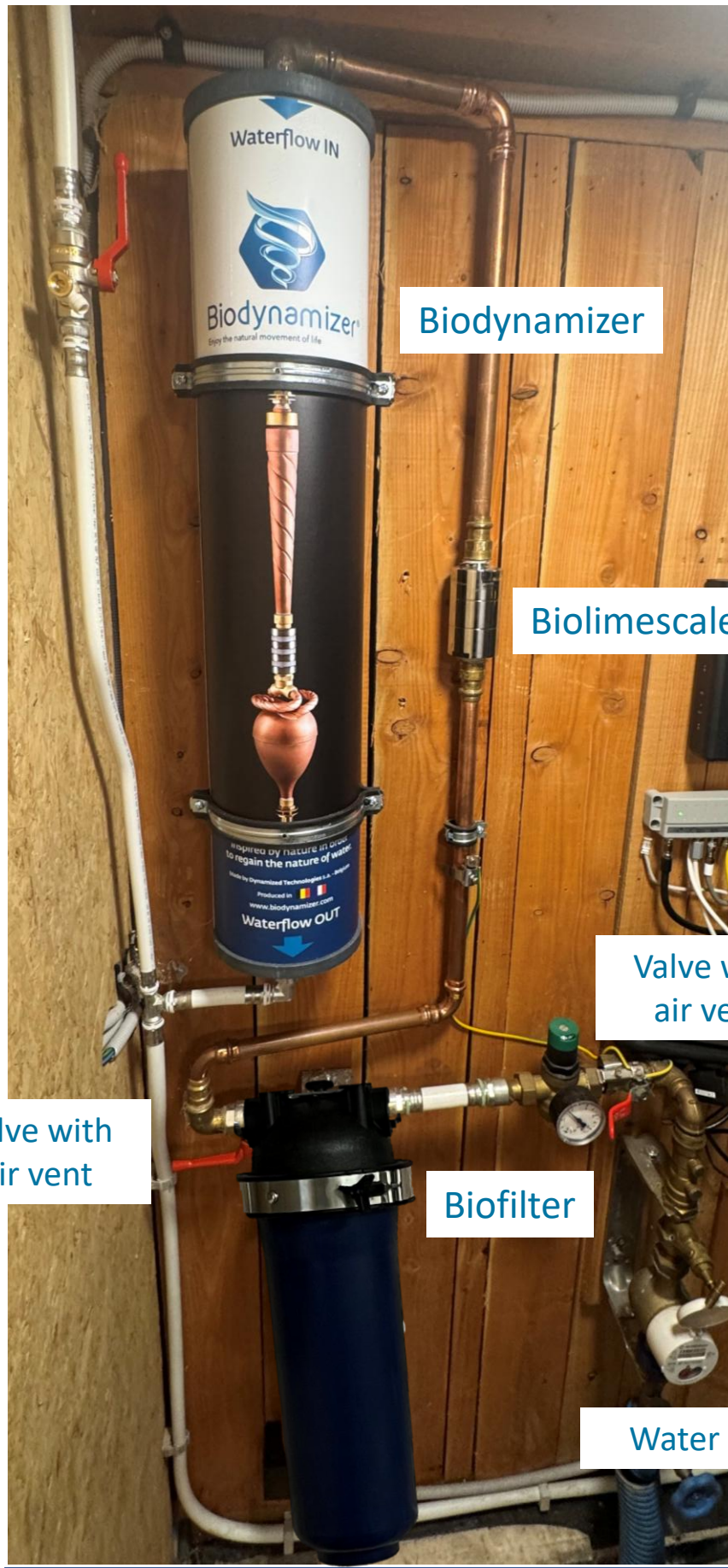
PLACEMENT INSTRUCTIONS BIOFILTER + BIODYNAMIZER

When placing the Biodynamizer, you can choose the orientation:

- Either the "flowing water fountain" side (assembly below)
- Or the "copper Biodynamizer" side (metal structure, assembly on the next page)



PLACEMENT INSTRUCTIONS BIOFILTER + BIODYNAMIZER



Biodynamizer

Biolimescaler

Valve with
air vent

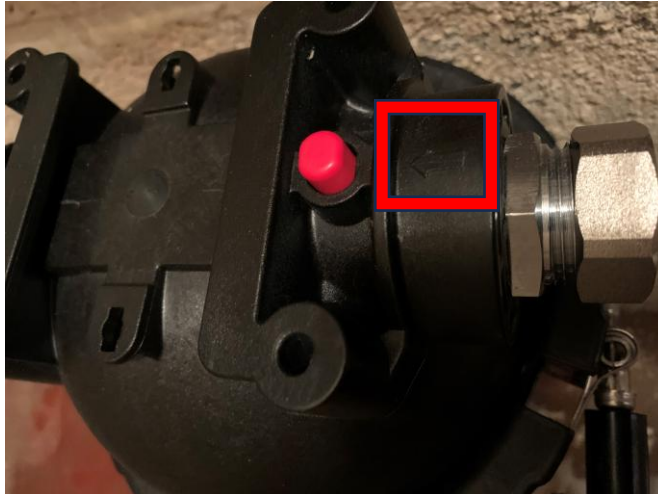
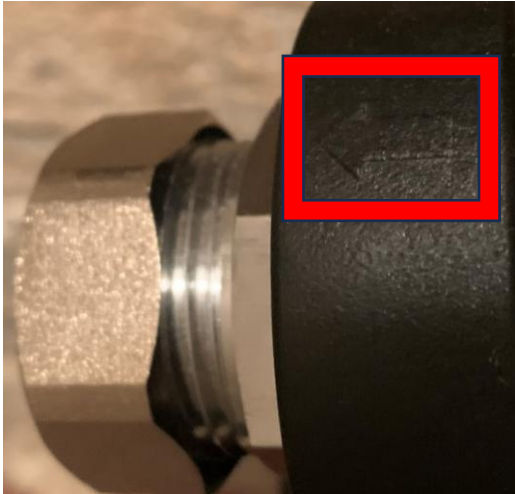
Valve with
air vent

Biofilter

Water meter



PLACEMENT INSTRUCTIONS BIOFILTER + BIODYNAMIZER

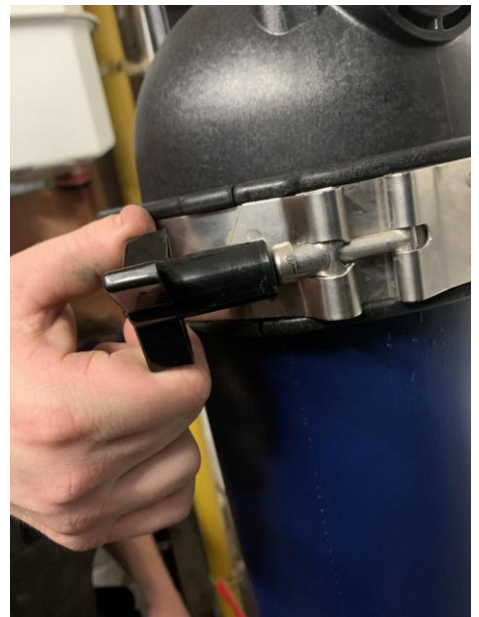


More info : www.biodynamizer.com or team@biodynamizer.com



Biodynamizer®
Enjoy the natural movement of life

PLACEMENT INSTRUCTIONS BIOFILTER + BIODYNAMIZER



More info : www.biodynamizer.com or team@biodynamizer.com

PLACEMENT INSTRUCTIONS BIOFILTER + BIODYNAMIZER

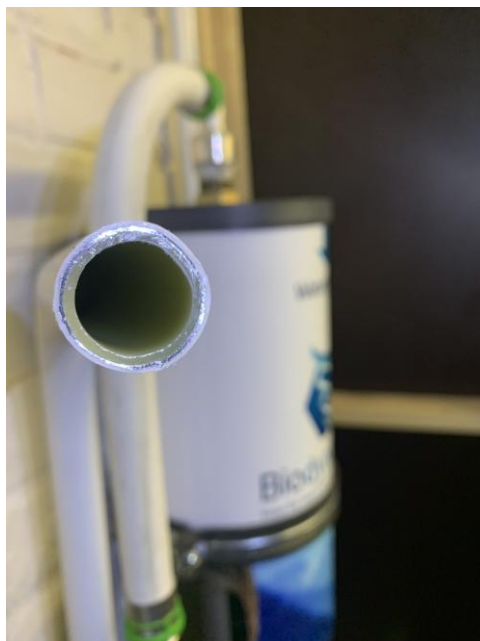


More info : www.biodynamizer.com or team@biodynamizer.com



Biodynamizer®
Enjoy the natural movement of life

PLACEMENT INSTRUCTIONS BIOFILTER + BIODYNAMIZER

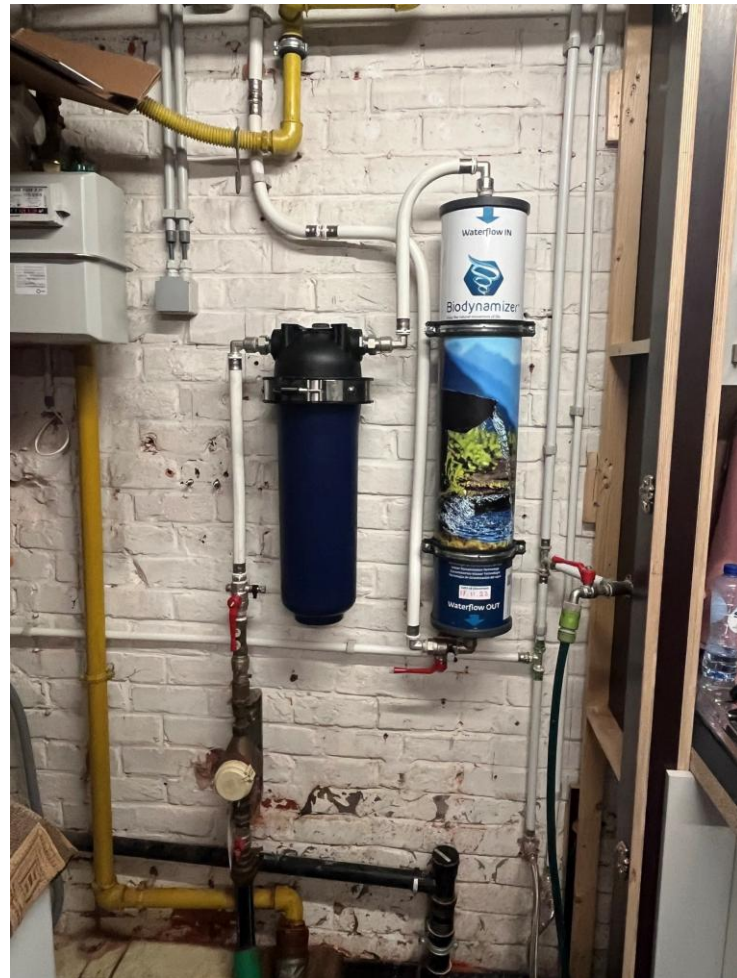
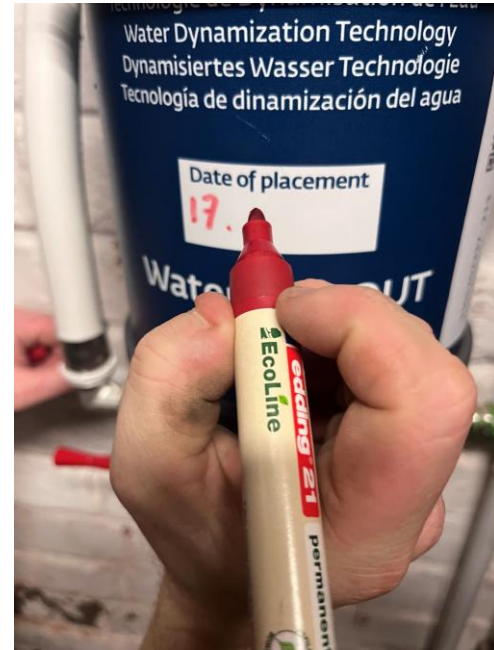


More info : www.biodynamizer.com or team@biodynamizer.com



Biodynamizer®
Enjoy the natural movement of life

PLACEMENT INSTRUCTIONS BIOFILTER + BIODYNAMIZER

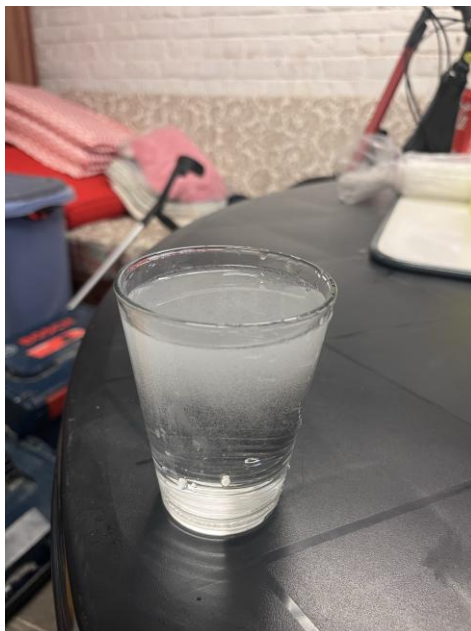
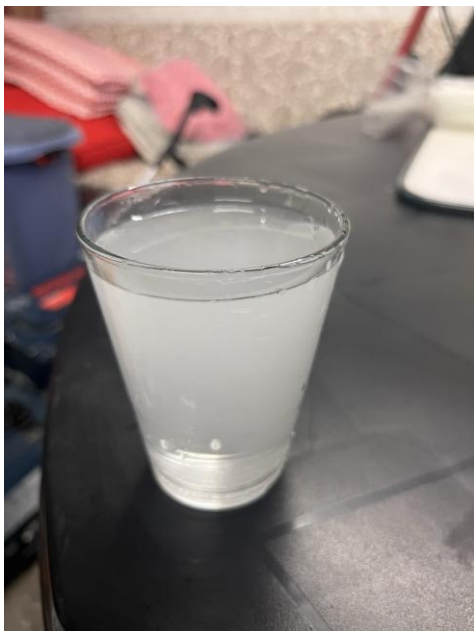


More info : www.biodynamizer.com or team@biodynamizer.com



Biodynamizer®
Enjoy the natural movement of life

PLACEMENT INSTRUCTIONS BIOFILTER + BIODYNAMIZER



If you are going on vacation or after a prolonged period of absence (> 8 days), let the water run from a tap for +/- 5 minutes in order to purge the water that will have stagnated in the sanitary pipes!





- **Connection after the cold-water meter (max 38 ° C)**
- **Capacity: 150 m³ and max 1 year**
- **Flow rate: 1.5 m³/Hour (or 25 L/min) at 3 bars**
- **Operating pressure max: 6.5 bar, pressure loss 0.1 bar if city water pressure: 1.5 > < 6 bar**
- **Legal warranty: 2 years**
- **Connections: 3/4 inch (ext. Ø: 26 mm, thickness : 3 mm, int. Ø : 20 mm)**
- **Dimensions and weight:**
 - ✓ **Biofilter housing:**
 - **PP:** Polypropylene reinforced with Glass Fiber (PP GF 10)
 - **H:** 606 mm x **Diameter:** 225 mm, weight of empty case: 3.4 Kg
 - ✓ **Bio Pro cartridge:** H: 505 mm x Diameter: 144 mm, max weight 3.5 kg of mixture of activated carbon, ionized silver and hollow fibers
- **Certificate of Sanitary Conformity issued by the Carso laboratory: n° 21 ACC LY 990**



TECHNICAL SHEET BIODYNAMIZER



Biodynamizer®

Enjoy the natural movement of life

- **Mechanism:** mechanical vortices & magnetic fields + transmission of natural mineral frequencies
- **No maintenance, no consumables**
- **Flow: 3,5 m³ / hour or +/- 60 l/mn at 3 bars**, or a sufficient flow for a private house inhabited up to 8 people
- **Operating pressure:** min **3 bars** - max **5 bars**. The aquifer part of the device resists pressures up to 10 bars and complies with European Directive 97/23 / EC concerning pressure equipment
- **Legal warranty (2 years)**
- **Tightness test :** each Biodynamizer is tested at a pressure of 10 bars for 3 minutes under water in order to check its tightness
- **3/4-inch brass fittings** (Ø ext. : 26 mm, thickness : 4 mm, Ø int. : 18 mm)
- **Dimensions:** cylinder + fittings: **895 mm** (822 mm without fittings) x cylinder outer Ø: **160 mm**, weight: +/- **19 kg + 2,2 L** with water in the device
- The Biodynamizer is manufactured by **S.A. Dynamized Technologies** – Sentier Muraes 10 at 1440 Braine le Château, Belgium
VAT: BE 0646898542 -
Company number at the ECB 0646898542
- **Certificate for Conformity of the metals in contact with water issued by Eurofins :** All materials in contact with water (copper & brass & silver) have sanitary compatibility in accordance with European Directive (EU) 2020/2184 relating to the quality of water intended for human consumption
- **Certified conform by Belgaqua (Belg 23/052/31b) according to standard EN1717** (protection in accordance with VIV0442023 - Conform, provided that a non-return valve is installed upstream of the Biodynamizer on the water pipe)



Biodynamizer®
Enjoy the natural movement of life

Know more: www.biodynamizer.com or team@biodynamizer.com